

# Pump Aggregat HPS TP 600 E with E Engine 355 KW



**HPS Hochdruckpumpenservice GmbH GmbH**  
Schmolkamp 4B  
D-29358 Eicklingen  
Germany

Tel: +49(0)5144-1869  
Fax: +49(0)5144-56605  
E-mail: [info@hps-celle.de](mailto:info@hps-celle.de)  
Web: [www.hps-celle.de](http://www.hps-celle.de)

# Technische Daten



## ANTRIEBS UND PUMPKENNWERTE

Betriebsdruck OPI 600 max	: 90 MPa
Pumpleistung OPI 600 max	: 900 L/min
Eingangsdrehmoment max:	: 2800 Nm
Leistung Antriebsmotor	: 355 KW
Drehzahl Antriebsmotor max	: 1500 RPM

## MAßE UND GEWICHTE

Länge	: 6050 mm
Breite	: 2500 mm
Höhe	: 2600 mm
Gewicht	: 13000 Kg
Hydrauliköltank Inhalt	: 200L

## GEWICHTE DER HAUPTKOMPONENTEN

OPI 600 Pumpe	: 2270 Kg
Elektromotor Siemens	: 2000 Kg

# Compact Well Service Pump



(101.5" back-to-back with one-inch gap)

### Specifications

Maximum Input	600 BHP (447 kW)
Maximum RPM	450
No. of Plungers	3
Stroke Length	6" (152 mm)
Plunger Load	100,000 lbs. (45,360 kg)
Pump Weight	4,600 lbs. (2,087 kg) average
Gear Ratio	4.6:1

## GD Compact Intermittent Duty Well Service Ratings

Plunger Diameter		Displacement per Revolution		Displacement at Pump RPM - Well Service Application															
				100				200				300				450			
in.	mm.	Gal/Rev.	Liter/Rev.	GPM	LPM	PSI	kg/sq. cm	GPM	LPM	PSI	kg/sq. cm	GPM	LPM	PSI	kg/sq. cm	GPM	LPM	PSI	kg/sq. cm
4.5	114	1.24	4.7	124	469	6288	442	248	938	3734	263	372	1407	2489	175	558	2111	1660	117
4	102	0.98	3.7	98	371	7958	559	196	741	4726	332	284	1112	3151	222	441	1668	2100	148
3.5	89	0.75	2.8	75	284	10394	731	150	568	6173	434	225	851	4115	289	337	1277	2743	193
3	76	0.55	2.1	55	208	14147	995	110	417	8402	591	165	625	5601	394	248	938	3734	263
2.75	70	0.46	1.8	46	175	15000	1184	93	350	9999	703	139	526	6666	469	208	788	4444	312
Input Power:		BHP		500				600				600				600			
		kw		373				447				447				447			

Ratings are based on 90% mechanical efficiency and 100% volumetric efficiency.



# Compact Well Service Pump



## Standard Features

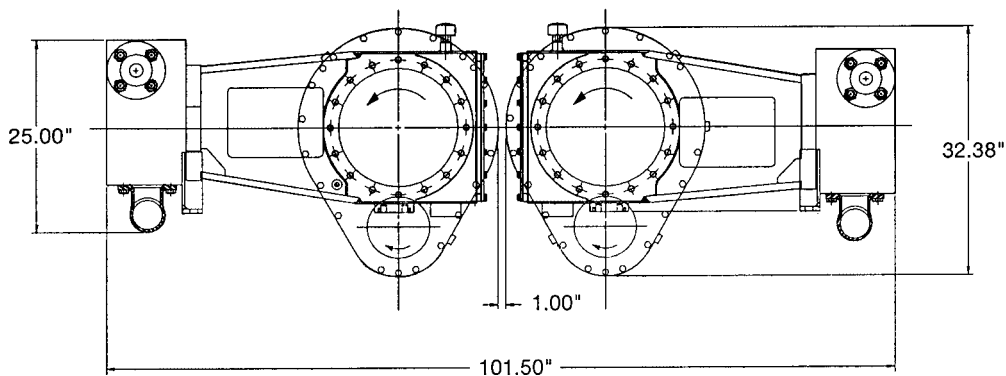
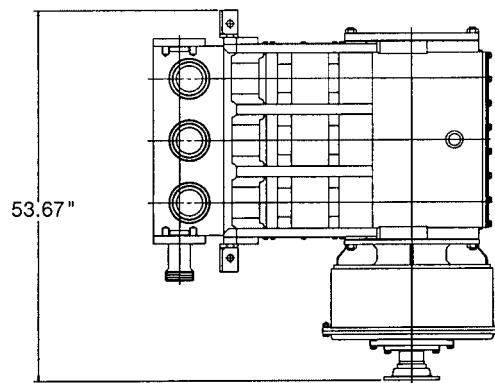
- Left or right gear box mounting
- Crankshaft type construction
- Multiple pinion locations
- Left or right side suction and discharge connections
- Hard Coated plungers
- Valve over valve fluid end
- Plunger sizes from 2.75" to 4.5"
- Suction manifold with Victaulic connections
- Header-ring style packing
- Center gauge connection
- One 2" 1502 discharge flange
- One blank flange
- Fluid end tool kit

## Material Specifications

• Fluid End	Forged SAE 4330 alloy steel
• Stuffing Box	Steel
• Crankshaft	Forged steel
• Connecting Rods	Ductile iron
• Crossheads	High-strength cast iron
• Crosshead Guides	Ductile iron
• Crankpin Bearing	Automotive type
• Crosshead Bearing	Bronze

## Optional Equipment

- Tach drive adapter
- Dual discharge flanges
- Style 602 and 1002 discharge flange
- Additional center gauge connections
- Adjustable packing
- Spring loaded packing
- Tach drive adapter
- Suction manifold cylinder drains
- Valve seat puller assembly
- Hydraulic torque wrench



# Gardner Denver

Drilling & Production Pumps  
Gardner Denver Pump Division  
1800 Gardner Expressway  
Quincy, IL 62301  
Phone: 217-224-8800  
Fax: 217-224-7814

Drilling & Production After-Market  
Gardner Denver Pump Division  
2200 South Prospect  
Oklahoma City, OK 73129  
Phone: 405-677-5736  
Fax: 405-677-5807

Well Service Pumps  
Gardner Denver Pump Division  
4747 South 83rd East Avenue  
Tulsa, OK 74145  
Phone: 918-828-7800  
Fax: 918-447-6487

After-Market & Repair Facility  
Gardner Denver Pump Division  
7533 Kathy Lane  
Fort Worth, TX 76126  
Phone: 817-249-6400  
Fax: 817-249-6383

< [www.gardnerdenver.com](http://www.gardnerdenver.com) >