



Company presentation

HPS Hochdruckpumpenservice GmbH

History



1994:
Hans-Juergen Paulmann
founded HPS
Hochdruckpumpen-
service GmbH



1998/99:
New construction of a
workshop with office



2003:
Foundation HPS
Bohrtechnik GmbH



2015:
Foundation HPS Rental
GmbH



2019:
New construction of a
warehouse

1995:
Several employees are
hired
Extension of the
premises



2001:
Expansion through hall
construction with
electrical and pump
workshop



2006:
New construction of a
warehouse



2016:
New construction of a
warehouse



HPS at a glance



Over 5500 m²
workshop and
storage area

More than
180 pumping
units built

6 Pumptrucks

More than 200
skids and various
centrifugal pumps



More than
1050
suppliers

More than
530
customers

24/7
Customer-
support

35
Employees

Our Service

We are your specialist in the field of:

- Design, engineering and construction of:
 - High pressure pumping units
 - Skids
 - Paddle tanks
 - Storage tanks
- Maintenance, overhaul and repair of:
 - Engines
 - Transmisson
 - Pumps



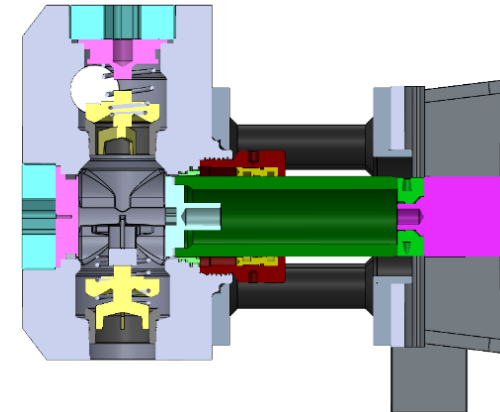
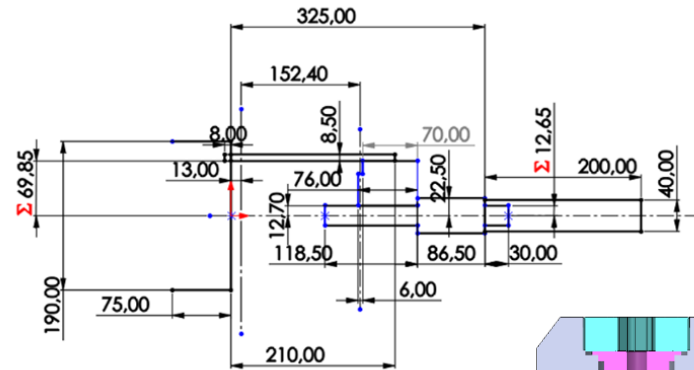
From concept to serial products

Concept phase:

- Design sections
- Design space definition
- Motion analysis
- Component definition

Component development:

- Detail design
 - Manufacturing analyses
 - Strength analyses
 - Drawing creation
-
- Manufacturing



Competences - High pressure units



Competences - Storage container

Project information:

Engine:
Electric drive - 1,5 kW

Volume:
7 m³



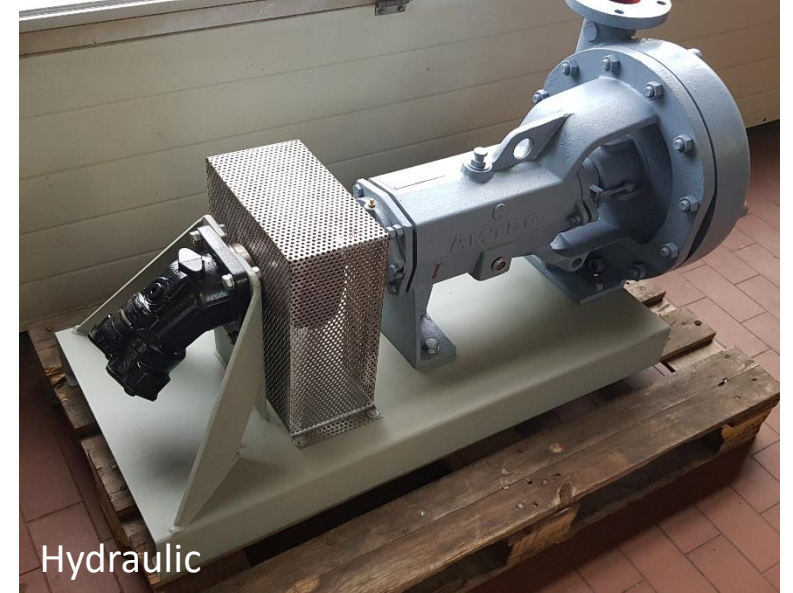
Competences - Centrifugal pump



Electrical



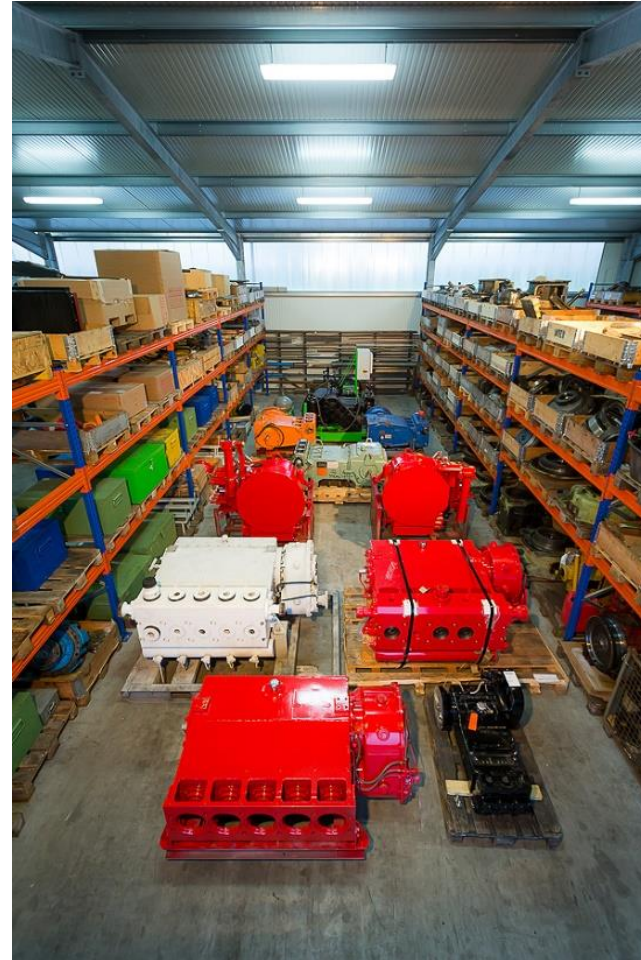
Combustion engine



Hydraulic

Sales - Spare parts

5.000 spare parts permanently in our warehouse



Service partner MSI and Gardner Denver

We're official Service partner for:



Your advantages with us:

- Over 25 years experience
- A global trading network from the USA to China

Sales – Pump units and others

We regularly offer new or used pump units, skids and pumps.
Just have a look at our site.



Go to → Pumpunits

<https://www.hps-celle.de/en/sale/sale-pumpunits.html>

Go to → High pressure pumps

<https://www.hps-celle.de/en/sale/sales-pump.html>

Competence - Rental of pumping units and accessories

Rental Park Overview:

The following high-pressure pumps are available from us.

- Power up to 135 kW: High pressure pump Kerr
- Power up to 370 kW: High pressure pump Metax / Halliburton
- Power up to 433 kW: High pressure pump Halliburton / GD / MSI / Oruc
- Power up to 571 kW: High pressure pump MSI 1000
- Power up to 705 kW: High pressure pump MSI 1000
- Power up to 839 kW: High pressure pump GD 1250

Ein Auszug unserer Kunden



HPS E-Container

Project information:

Engine:

Three-phase squirrel-cage motors SIMOTICS
630 kW mit 2 Sinamics G150

Transmission:

Kumera TG2280

Pump:

Oruc Typ MP60-70

Working pressure:

Max. 1595 psi

Flow rate:

Up to 2700 l/min



HPS C9 THE5

Project information:

Engine:

Caterpillar C9 242 kW

Transmission/Hydraulics:

Radial piston engine Hägglunds

2x Axial piston pump Bosch

Pump distributor transmission Technodrive
AM 345 B

Pump:

Gardner Denver THE

Working pressure:

50 - 205 bar

Flow rate:

155 – 1750 l/min.



HPS C15 GD600

Project information:

Engine:
Caterpillar C15 433 kW

Transmission:
Allision 4700 Series

Pump:
OPI-600

Working pressure:
350 bar

Flow rate:
1800 l/min.



Drilling Simulator

Project information:

Engine:
Electric drive – 600 kW/690V

Pump:
BT 60-70 on a Skid

Working pressure:
350 bar

Flow rate:
2700 l/min.



HPS C15 MP 60/70

Project information:

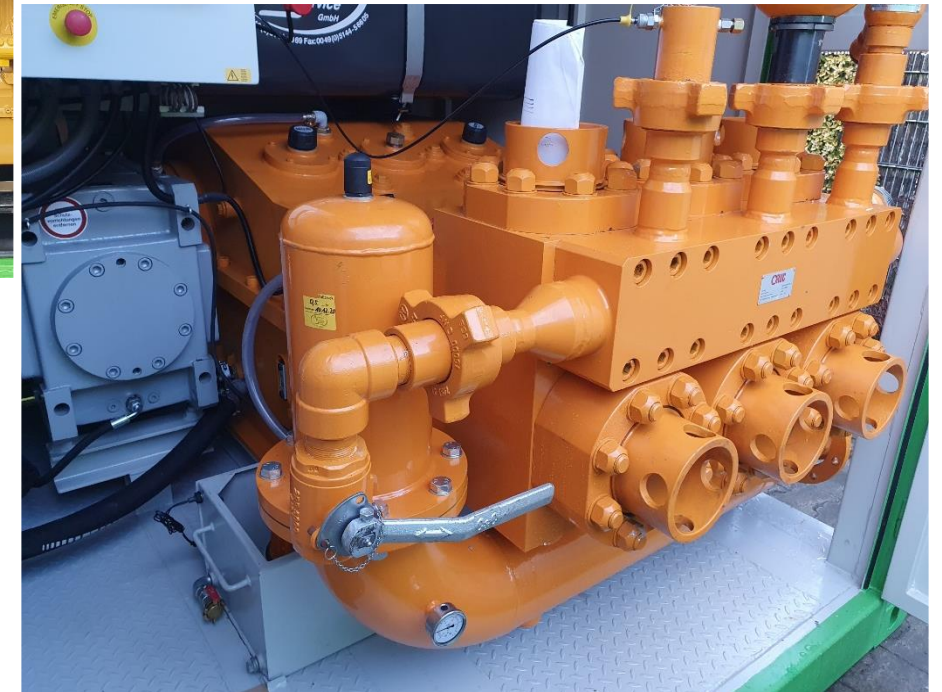
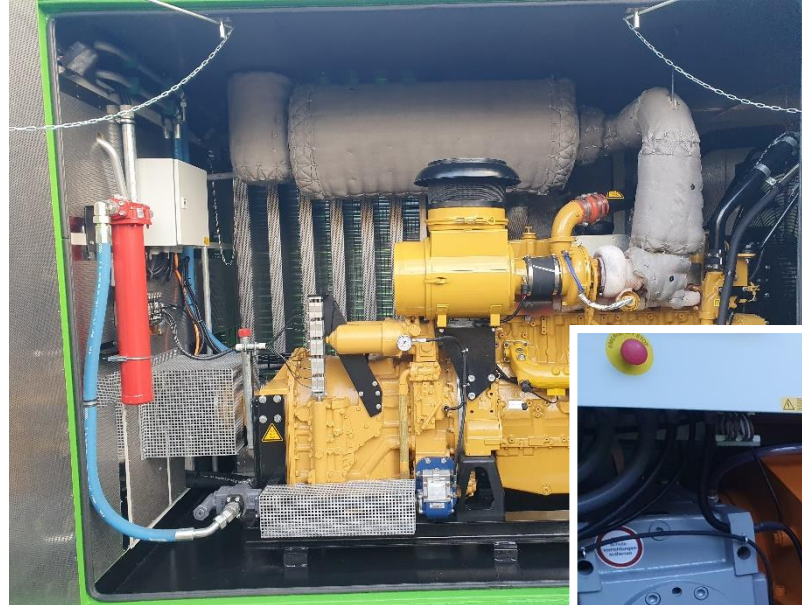
Engine:
Caterpillar C15 433 kW

Transmission:
Allison Getriebe Series CLT 5960-4

Pump:
MP 60-70

Working pressure:
110 bar

Flow rate:
2700 l/min.



HPS C18 SWL1000

Project information:

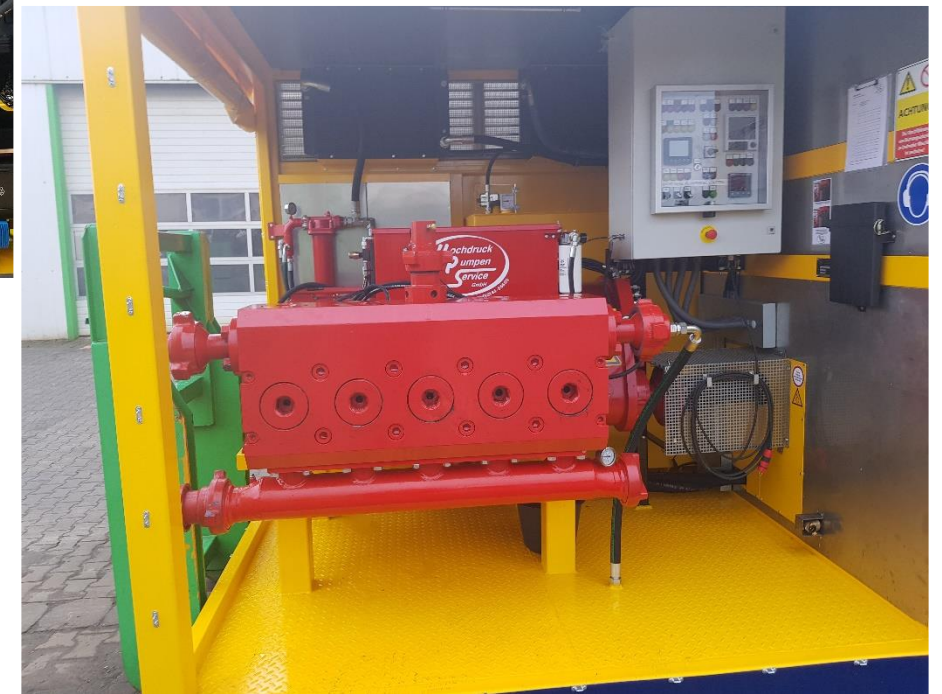
Engine:
Caterpillar C18 597 kW

Transmission:
Allison Powershift Type CLT 6620 OFS

Pump:
SWL 1000

Working pressure:
716 bar

Flow rate:
2800 l/min.



HPS C15 TI600

Project information:

Engine:

2x Caterpillar C-15 ATAAC

Transmission:

2x Allison Powershift Series CLT 5960/4

Pump:

2x MSI High pressure pump Type TI600

Working pressure:

4 ½" – 433 bar

2 ¾" – 1161 bar

Flow rate:

4 ½" – 2111 l/min.

2 ¾" – 788 l/min.



Twin unit C11 TI600

Project information:

Engine:

2x Caterpillar C-11 ACERT

Transmission:

2x Allison Powershift Series 4700 OFS

Pump:

2x MSI High pressure pump Type TI600

Working pressure:

975 bar

Flow rate:

938 l/min.



HPS Hochdruckpumpenservice GmbH

Schmolkamp 4b

D - 29358 Eicklingen

Phone: +49 (0)5144 - 1869

Email: info@hps-celle.de

Web: www.hps-celle.de



Follow us:



www.linkedin.com/company/hpshochdruckpumpenservicegmbh/



www.xing.com/pages/hps-hochdruckpumpenservice-gmbh

